

Reinwood I&N Newsletter

THANK YOU

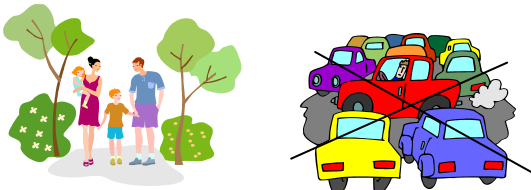
to all parents and carers for your continued support of school so far this year. Our raffle Easter café at the end of last term raised just over £100 for school funds, for which we are really grateful.

Outdoor Week



Many thanks to all who were able to join us for our outdoor week at the beginning of term. The sun shone and a great time was had by all. Some of the highlights included kite making & flying, mini beast hunts, planting vegetables & creating natural sculptures.

Walk to School Week



A huge THANK YOU again, for the success of our recent initiatives during walk to school week. We really appreciate the support and extra effort everybody went to during the week. It has been fantastic to see that support continue this week. We would really like to continue with the Red Zone as this has ensured the roads around school have been much safer. After the holidays we hope to hold some meetings to explain and explore the possibilities of a dedicated daily walking bus service from the Park and Stride zones. **A special thank you also to those parents and children who have helped by being a 'traffic warden' this week. If you would like to volunteer please call to the office.**

Summer Fair



Further details about the school fair will be coming out just after the half term break. Any support you can give by collecting items itemised in the accompanying letter or by helping out on a stall would be very gratefully received.

Tesco/Sainsbury's Tokens

Many thanks for the fantastic response of supermarket tokens. We already have a wish list for how we would like to use them. We **urgently** need help in counting them all, so if you can spare some time with this please call to the school office.

Down on the Farm



Nursery pupils had a great day out of school visiting the farm at Cannon Hall. Children enjoyed an informative guided tour of the farm followed by a picnic and fun climbing in the park area.

Yorkshire Sculpture Park



Next half term Year 1 will be going on a trip to Yorkshire Sculpture Park, where children will enjoy a long country walk and work with an artist in residence to explore the art of sculpture.

Sealife Centre



Y2 will be making a trip to the St Anne's next half term and will be exploring sea creatures as part of their topic work at Blackpool Sealife Centre.

Artist Workshops



Nursery and Reception children have worked with a visiting artist this term to create some lovely work around the theme of hands. This work will be displayed at our Summer Fair on Saturday 10th July.

Multi skills



Classes from Year 1&2 have benefited from PE coaches who have been coming to work with them on multi-skills activities during lunchtimes. All this is aimed at helping to improve fitness.

School Choir

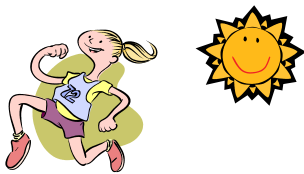


Miss Mair and Mr Hinchliffe have been working extremely hard with the Y2 choir in preparation for a number of local festivals. We were very proud of the positive comments they received from the adjudicator at Huddersfield Grammar School's Music Festival, where they recently performed. They will be singing at two events at the Town Hall next half term.

REMINDER FROM THE OFFICE

Please try to ensure that all dental and medical appointments are made outside school hours wherever possible.

All appointments should be confirmed with the office, who require sight of the appointment cards, and NOT Class teachers.



Sports Day

Sports Day was a great success we will be presenting winners medals in achievement assembly the first Friday back after the holidays. Thank you to all who came to support the children and congratulations to the brave mums and dads who entered the parents race!

**School closes on Today
and**

**School begins again for the last half term
on**

Monday 4th June

We look forward to seeing you again then!

**In the meantime have a fantastic
half term break!**

Diary Dates for next half term

Tues 8 th June	Trip to the Seaside – Y2
Mon 14 th Fri 18 th June	Yorkshire Sculpture Park – Y1
w/c 21 st June	Community Week
Mon 21 st June	New Nursery starters mtg 6pm
Tues 22 nd June	New Reception starters mtg 6pm
Friday 2 nd July	Reports Home
Mon 5 th July	Great British Summer Festival Week
Tuesday 6 th July	Transition Day-children to visit their new class
Sat 10 th July	Summer Fair
Tues 13 th July	EYFS Summer Concert 9.15am & 2.30pm
Weds 14 th July	KS1 Summer Concert 9.15am & 2.30pm
Fri 16 th July	End of Year & Y2 Leavers Assembly 9.15am
	Whole School Picnic lunch

School Closes for Summer Holidays