

# Reinwood Infant & Nursery School Year 1



Dear Parents,  
Our topics for Summer 1<sup>st</sup> half Term are ...  
**Out and About with Barnaby Bear**

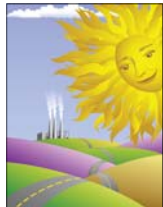
**Science:**  
Growing  
plants



**Art:**  
Collage



**Outdoor Week:**  
Exploring  
the environment



**Geography:**  
Understanding  
and comparing  
places



**PSCHE:**  
Keeping safe  
and solving  
problems



**DT:**



## Ongoing activities:

Week	<b>Knowledge an Understanding of the World (KUW)</b> The areas we will be covering are:	<b>Mathematics</b>
<b>Week 1</b> 19/4/10	<b>Outdoor Week</b> Planting Designing and making kites. Exploring our schools natural environment.	<b>Data Handling and Measures</b> <ul style="list-style-type: none"> <li>• Problem solving</li> <li>• Recording on charts, lists, tables and graphs</li> <li>• Measuring with rulers and metre sticks</li> </ul>
<b>Week 2</b> 24/4/10	<b>Science</b> Growing plants	<b>Time</b> <ul style="list-style-type: none"> <li>• Using time vocabulary</li> <li>• Ordering days, months and seasons</li> <li>• Read time to hour and half hour</li> </ul>
<b>Week 3</b> 3/5/10	<b>Design Technology</b> Food technology—fruit and vegetables	<b>Repeated addition/Multiplication</b> <ul style="list-style-type: none"> <li>• Count repeated groups of objects</li> <li>• Count in 2's, 5's and 10's</li> <li>• Doubles</li> <li>• Number bonds</li> </ul>
<b>Week 4</b> 10/5/10		<b>Money</b> <ul style="list-style-type: none"> <li>• To recognise coins</li> <li>• To pay and give change</li> <li>• To use addition and subtraction in the context of money</li> </ul>
<b>Week 5</b> 17/510	<b>Art</b> Looking at Van Gogh	<b>Division</b> <ul style="list-style-type: none"> <li>• Share sets of objects into equal groups</li> <li>• Solve problems that involve sharing</li> </ul>
<b>Week 6</b> 24/510	<b>Geography</b> Compare London and Huddersfield	<b>Doubling and halving</b> <ul style="list-style-type: none"> <li>• Find a half by sharing into 2 groups</li> <li>• Find a quarter by sharing into 4 equal groups</li> <li>• Understand the relationship between doubling and halving</li> </ul>

# You may wish to help your child explore these topics

## Our suggested activities and some key questions are:

- Think about the environment, go on a walk and look at plants, trees and flowers.
- Talk about how to look after the environment and how to take care of plants. Can you do some planning? What do plants need to grow?
- How can we help the environment?
- Name the parts of the flower or plant.
- We will be looking at London and comparing to Huddersfield. Can you find out about anything about London?

- Which famous artists have done paintings or pictures of flowers.
- We are thinking about healthy eating. Which foods are healthy? Which of these healthy foods are grown?

## Have a look at these websites:

[www.bbc.co.uk/schools/scienceclips/ages/5\\_6/growing\\_plants.shtml](http://www.bbc.co.uk/schools/scienceclips/ages/5_6/growing_plants.shtml)

[www.learnanytime.co.uk/Science/Plants.htm](http://www.learnanytime.co.uk/Science/Plants.htm)

[www.bbc.co.uk/schools/barnabybear/](http://www.bbc.co.uk/schools/barnabybear/)

[www.recyclezone.org.uk/home\\_fz.aspx](http://www.recyclezone.org.uk/home_fz.aspx)

## On going activities

### Literacy

- Please help your child with the phonics, high frequency/tricky words and spellings that they bring home each week.
- Please read regularly with your child from a whole range of reading materials. Please ask your child questions about what they have read to check their understanding.
- Please help your child practice their cursive handwriting. To always begin on the line and have

### Mathematics

- Talk about the weekly topics that are detailed in the opposite table.
- Ask simple questions about using numbers in real life e.g. telling the time, o'clock and half past, money.
- Learn number bonds to 10 and 20
- Learn doubles of numbers.

- Other homework will be sent for you to share with your child in their 'Learning Log'. Please encourage and **help them with this then return it to school.**
- Please ensure your child has a full indoor and outdoor PE kit at school.